

Road Maintenance Program

Brenda Red Wing
Regional Transportation Engineer
Great Plains Region

Level of Service (LOS)

1. Level of Service evaluates all elements of the roadway such as road surface, shoulder, drainage, vegetation signs, and sight lines.
2. The LOS determines to overall condition of the roadway.
3. There are 5 categories for LOS

Level of Service continued

1. Level 1-Excellent
2. Level 2-Good
3. Level 3-Fair
4. Level 4-Poor
5. Level 5-Failing
6. Level of Service 1 & 2 are referred as "Acceptable or "Good or Better"

Level of Service (LOS) Paved Roads

Level of Service 1



Level of Service 1 continued



Level of Service 1 continued



Level of Service 2



Level of Service 2 continued



Level of Service 2 continued



Level of Service 3



Level of Service 3 continued



Level of Service 3 continued



Level of Service 4



Level of Service 4 continued



Level of Service 4 continued



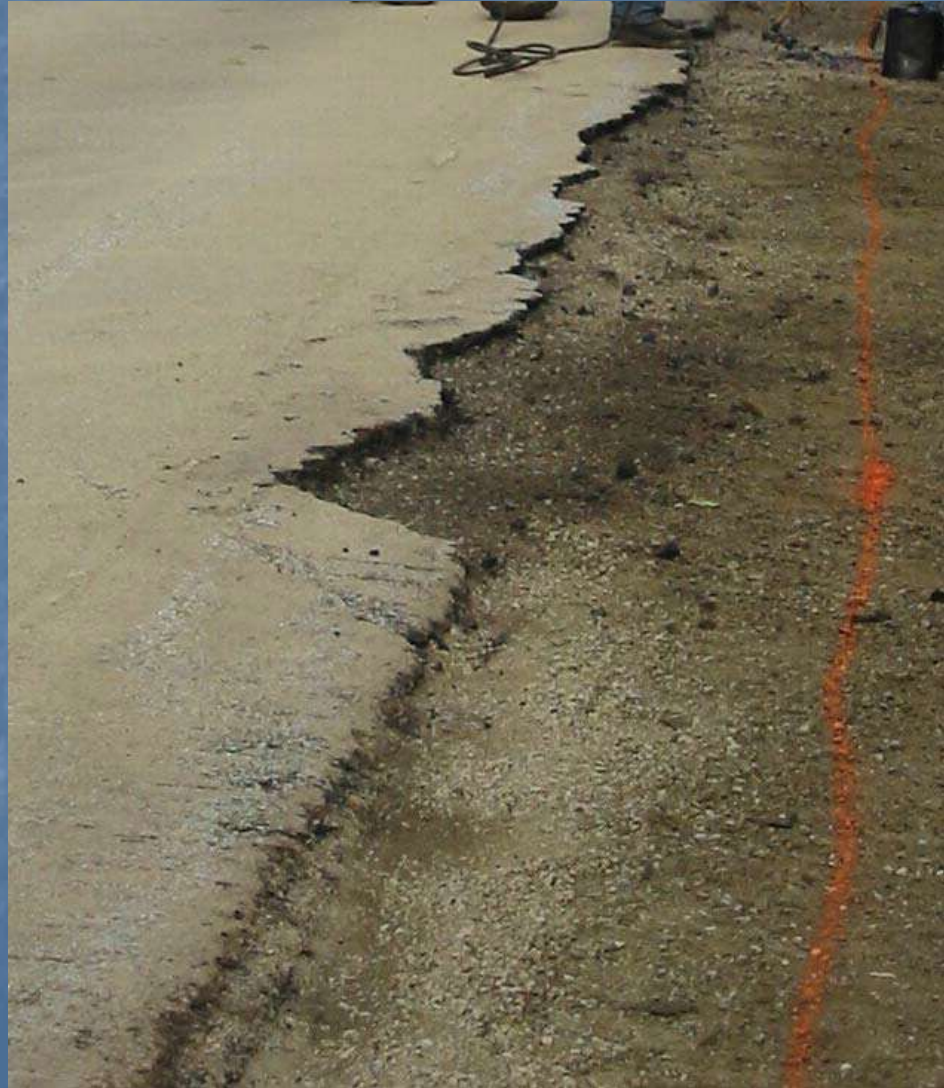
Level of Service 4 continued



Level of Service 5



Level of Service 5 continued



Level of Service 5 continued



Level of Service 5 continued



Level of Service 5 continued



Level of Service 5 continued



Level of Service (LOS) Unpaved Roads

LOS 1



LOS 1 Cont



LOS 1 Cont



LOS 1 Cont



LOS 1 Cont



(Photographs of gravel-surfaced roadways in excellent condition)

LOS 1 Cont

(Photographs of gravel-surfaced roadways in excellent condition)



LOS 2



LOS 2 Cont



LOS 2 Cont



LOS 2 Cont



LOS 2 Cont



LOS 2 Cont.



LOS 3



LOS 3 Contn



LOS 3 Cont



LOS 3 Cont



LOS 3 Cont



LOS 3 Cont.



LOS 4



LOS 4 Cont



LOS 4 Cont

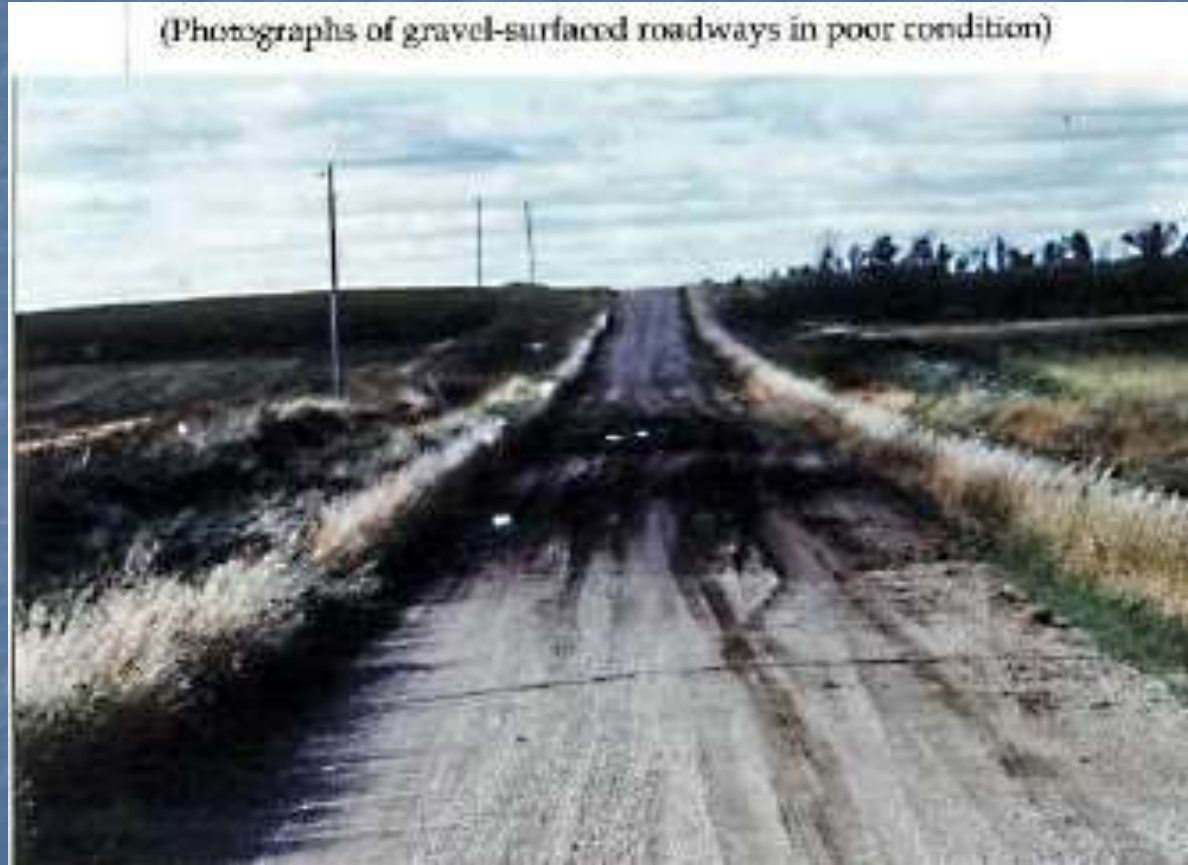


LOS 4 Cont



LOS 4 Cont

(Photographs of gravel-surfaced roadways in poor condition)



LOS 4 Cont



(Photographs of gravel-surfaced roadways in poor condition)

LOS 5



LOS 5 Cont



LOS 5 Cont



LOS 5 Cont



LOS 5 Cont



(Photographs of gravel-surfaced roadways in failed condition)

LOS 5 Cont.



Questions??

