

DEFENSE ACCESS ROAD PROGRAM

North Dakota Division Office

Current Graveling & Future Projects

Mark Schrader, PE
Transportation Engineer
Federal Highway Administration
Mark.Schrader@dot.gov

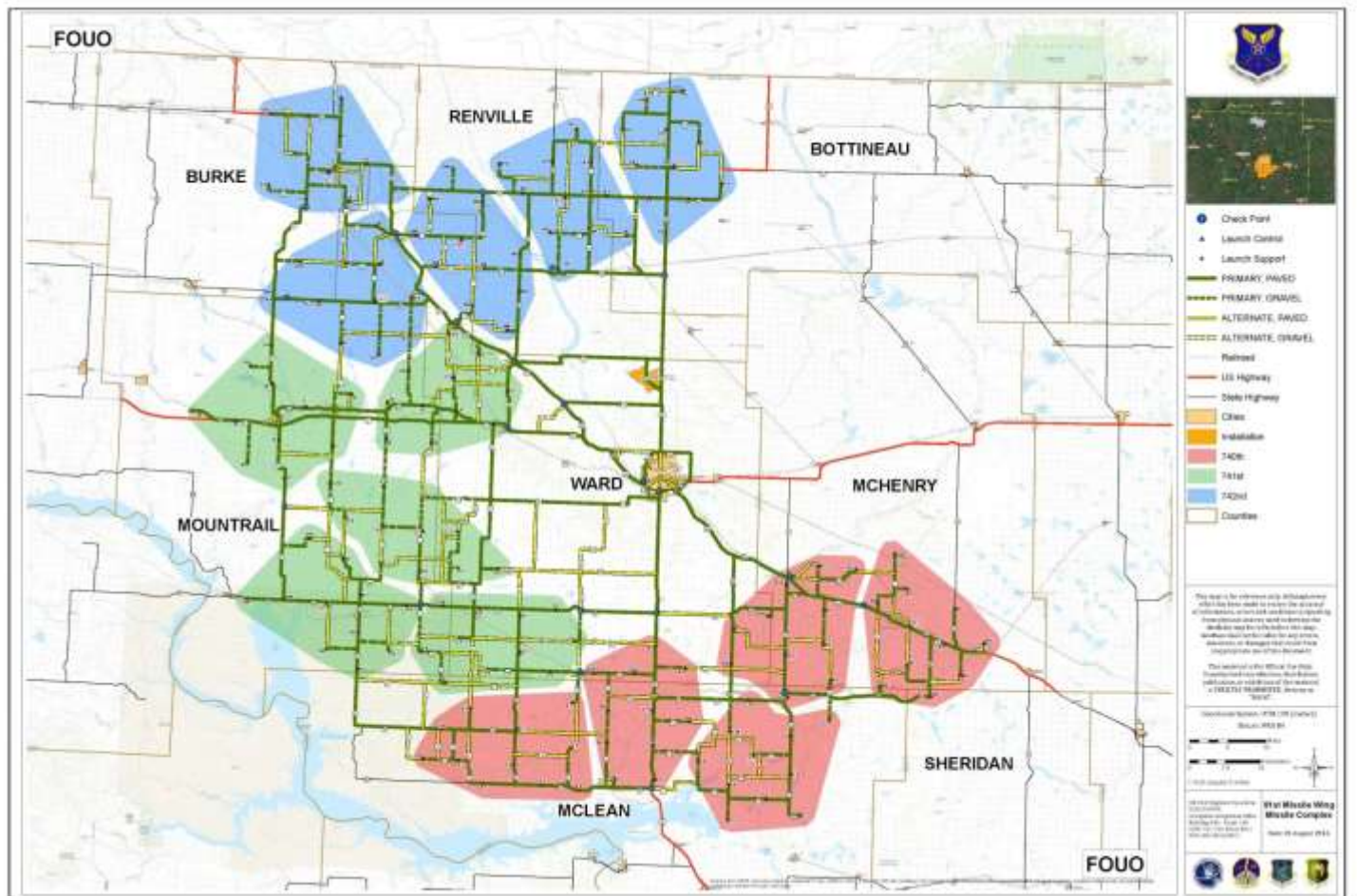


U.S. Department of Transportation
Federal Highway Administration

Minot Air Force Base

North Dakota Division Office

Rugged North Dakota Landscape



Definitions

North Dakota Division Office

Rugged North Dakota Landscape

- **Defense Access Road (DAR)**
 - Program that provides a means for the Federal Government to pay its fair share of the cost for repairs and re-graveling to unimproved missile routes to ensure their continued ability to support the missile transporter-erector (TE) vehicle. This program is required due to the TE size and weight (no other missile vehicle mandates the DAR program). Program is managed by Military Surface Deployment and Distribution Command (SDDC) and is the liaison to Federal Highway Administration (FHWA).
- **Transporter-Erector (TE) Route**
 - A road specifically designated for use by the TE vehicle for access to missile sites.





- Over 300 miles of gravel TE routes in 8 counties in Northwestern ND.
 - Includes county and township roads.
 - Air Force inspects these roads yearly.
 - Federally funded graveling projects typically managed by NDDOT.



2016 Missile Graveling Needs

North Dakota Division Office

Rugged North Dakota Landscape

- Common Road Surface Problems
 - Float
 - Washboards





GRAVEL PI REQUIREMENT

North Dakota Division Office

Rugged North Dakota Landscape

- Past TE Route graveling projects did not have a PI (Plasticity Index) requirement.
- 2016 graveling project added PI requirement of 4-9
- About 40 miles of TE Routes were graveled this year with the PI requirement.
 - Included roads in Ward, Mountrail, Burke, Renville, and Bottineau Counties



Monitoring Roads with PI

North Dakota Division Office

Rugged North Dakota Landscape

- FHWA and the Air Force will be monitoring the success of the gravel with a PI requirement.
- Also working with the counties to determine if the PI specification is reducing maintenance needs



2016 Missile Graveling Needs

North Dakota Division Office

Rugged North Dakota Landscape

- Common Road In-slope Problems
 - Erosion
 - Riprap migrating into embankment



Erosion



Rugged North Dakota Landscape

North Dakota Division Office



10/18/2016 16:18



U.S. Department of Transportation
Federal Highway Administration



- Future projects –
 - Reclaim portions of Old 2 in Mountrail County
 - Pulverize pavement and return road to gravel
 - Township and County road erosion repair
 - Project under development

