

PARTNERING IN SARPY COUNTY

Sharing the Load

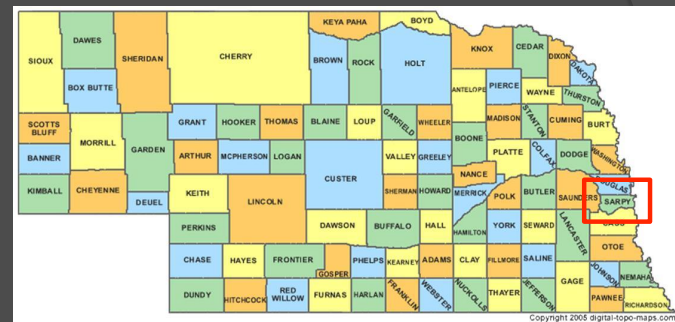
Sarpy County Nebraska

SARPY COUNTY NEBRASKA

Local Roads Conference 2014



Location



Sarpy Bio

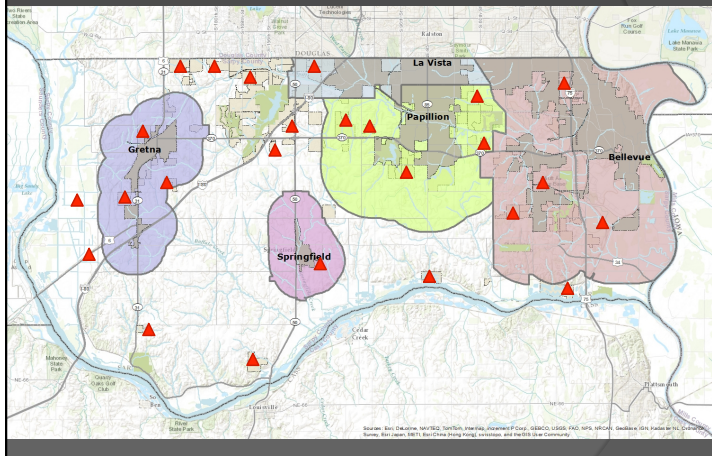
- Omaha CMA of 922,051 (2012)
- County population in 2012: 165,853
- Approximately 250 sq. mi. (647 sq. kilometre)
 - Land area: 241 sq. mi.
 - Water area: 6.8 sq. mi.
- Approximately 450 lane miles of gravel roads.



Partnering

- Local Cities
- Sanitary and Improvement Districts
- Developers
- Rural Road Districts
- Arterial Street Improvement Program (ASIP)

Rural and Urban Neighbors



What is a Sanitary and Improvement District?

- Unique to the State of Nebraska an SID is a governmental agency capable of creating capital improvements and levying assessments (taxes) on properties within their boundary
- Comprised of an elected Board of Trustees (must own property within the district).



What is a Sanitary and Improvement District?

- The boundary size varies but most are less than 1 square mile (2.6 square kilometers) and greater than 25 lots
- Encourages growth due to lower investments for developers.



Rural Road Districts

- State Statute
- Majority is adjacent owners' contribution
- Twenty-five percent (25%) required to begin process
- Fifty-one percent (51%) needed to enact district
- County pays for public portions (turn lanes and intersections)

Arterial Street Improvement Program

- Levies a fee on all building permits
- Create a fund in the budget
- Up to the County Engineer to decide where it goes
- Board approval required.

Questions?

Sarpy County Public Works
Dennis Wilson
dwilson@sarpy.com
402 537-6900