

YOU SHOW US CONTEST 2014



“YOU SHOW US” – How to Build a Road in South Dakota



Really???



“YOU SHOW US” CONTEST

Judges

- Jim Hyde; DOT Pierre Region Operations Engineer (SD)
- Tom Croymans, PE LS; Acting Regional Roads Engineer – Division of Transportation, Great Plains Regional Office, BIA
- Gary Brennan, PE; Brosz Engineering (ND)
- Terry Jorgensen; Retired DOT Custer Engineering Supervisor / Former Local Government Engineer (SD)
- Ron McMahon; Project Development Operations Team Leader - FHWA
- Mark Clausen; Structures Engineer / Operations Team Leader – FHWA
- Ron Blachford; Retired Highway Superintendent (Hand County, SD)

"YOU SHOW US" CONTEST Judges Ranking Sheet

The following is provided only as a tool. You can use the following simple score sheet to rank nominees from highest/best (4) to lowest (1).

PROJECT NAME:	Flagging Box	Milling Scoop	Motor Grader Blade End Gate	Redesigned Sign Truck
Safety Improvement				
Operational Efficiency				
Innovation				
Cost Savings				
Ease of Implementation by Others				
TOTAL:				

Please provide a comment or two as to why you selected your *first* choice:

Colorado: *Milling Scoop*

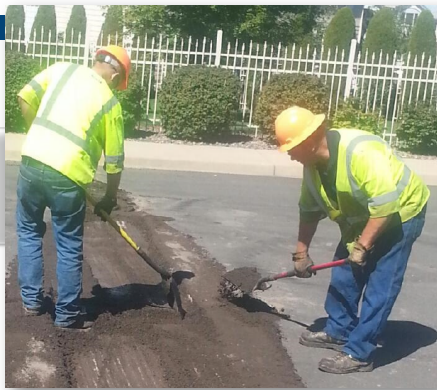
- Keith Runyan
Arapahoe County



Colorado: *Milling Scoop*

Problem

Too much time
cleaning up
milled area



Colorado: *Milling Scoop*

Solution



Colorado: *Milling Scoop*

Labor & Materials

- Total cost: less than \$400
 - parts & labor (less than a day)

Colorado: *Milling Scoop*

Savings & Benefits

Time



Nebraska: *Motor Grader Blade End Gate*

- Lynn Wooldrik
Dodge County

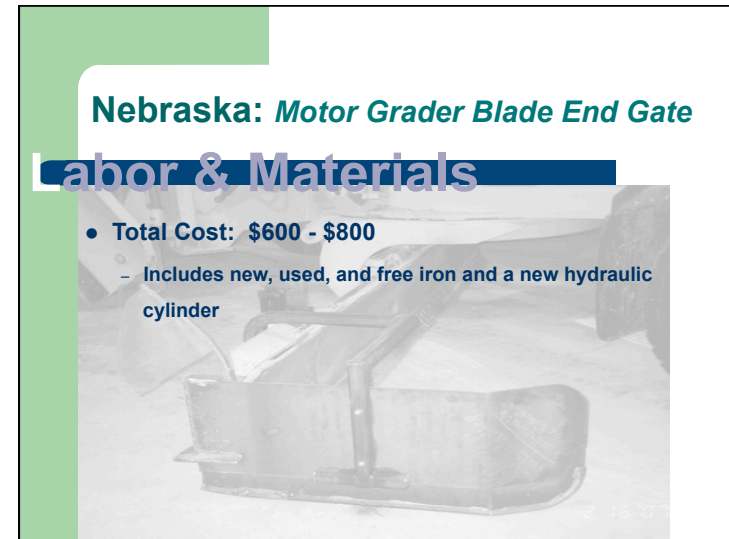


Nebraska: *Motor Grader Blade End Gate*

Problem

Multiple trips
down roads





North Dakota: Redesigned Sign Truck

Problem

Poor design
& inefficient



North Dakota: Redesigned Sign Truck

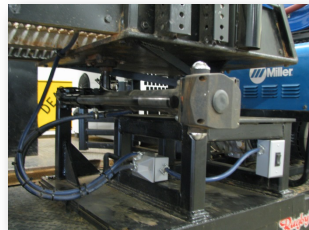
Solution



North Dakota: Redesigned Sign Truck

Labor & Materials

- Camper jack - \$200
- Pivot hub - \$150
- Electric switches & boxes - \$100
- Iron square tubing & flat plate - \$350
- Tool box, air hose reel - \$400
- Labor – 20 hours during down time (adverse weather conditions)
- **Total cost: \$1,200**



North Dakota: Redesigned Sign Truck

Savings & Benefits

Safety
Time
Cost



South Dakota: *Flagging Box*

- Brian Gustad
Yankton County



South Dakota: *Flagging Box*

Problem



South Dakota: *Flagging Box*

Solution



South Dakota: *Flagging Box*

Labor & Materials

- Box (aluminum shelves, metal tubing & frame) - \$350
- Contents (all signs & supports) - \$550
- **Total Cost: \$900**



