



U.S. Department of Transportation
Federal Highway Administration

Moving Forward Local Roads Conference

October 21, 2021

Hillary Isebrands, PE, PhD

Senior Safety Engineer
FHWA Resource Center
Safety & Design Team



Our Conversation Today

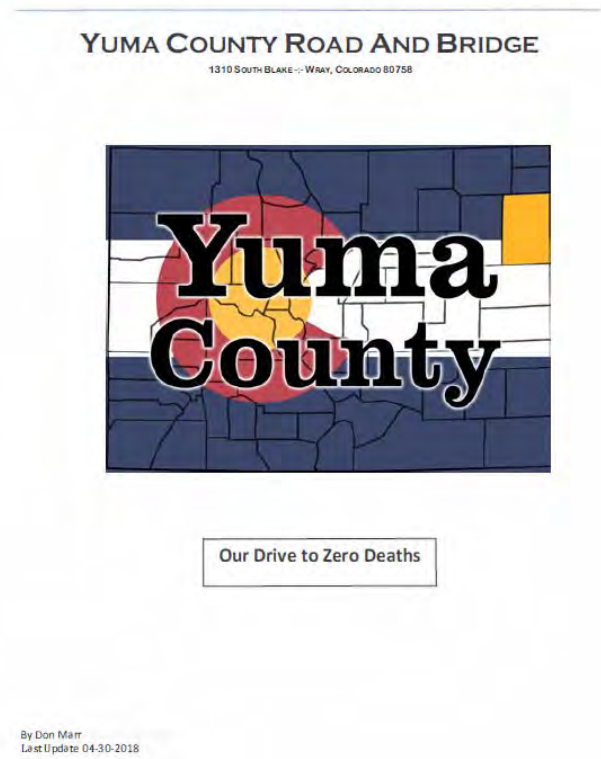
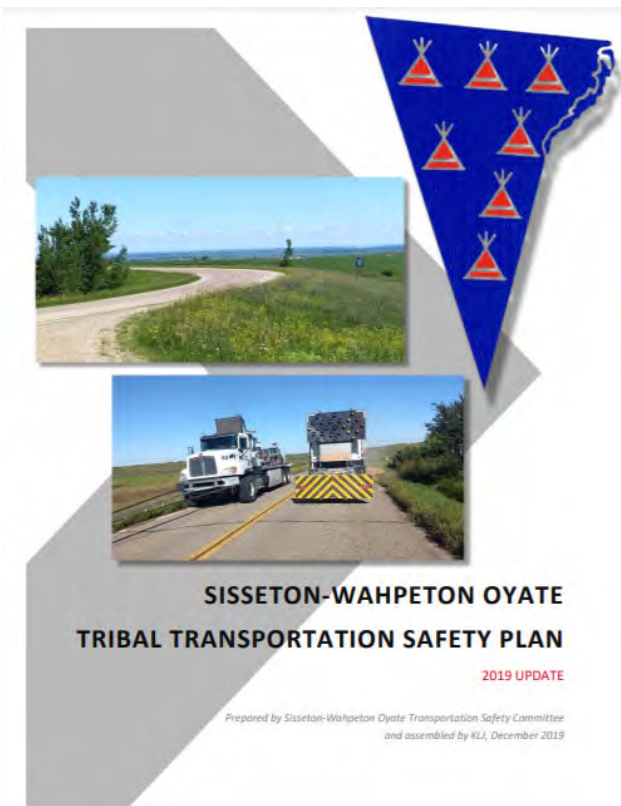
- Local Road Safety plans for Smaller Communities
- Systemic Safety for Gravel Roads
- FHWA Proven Safety Countermeasures and the 2021 Focused Approach to Safety
- Road Safety Awareness
- Helping People Get Home Safely

Local Road Safety – A Case Study

California has used
Local Road Safety Plans
to bring people together
and save lives.



Local Road Safety Plans for Smaller Communities



<https://safety.fhwa.dot.gov/LRSPDIY/>

Tribal Transportation Safety Plans – Tribalsafety.org

HOME

COMMUNITY ▾

RESOURCES ▾

NEWS/EVENTS ▾

FATALITY DATA

Transportation Safety for Tribes

Transportation Safety for Tribal Governments



Join the Mailing List



Funding



Training & Events



Contacts



Pedestrians



Roadway Departure



Impaired Driving



Seat Belts &
Child Safety Seats



Availability of Public Safety
Services



Safety Plans



Safety Data
Collection & Analysis



More...

Local Road Safety Plans for Smaller Communities

The screenshot displays the homepage of the Local Road Safety Plans (LRSP) DIY website. On the left, a vertical banner features a road graphic and the text "LOCAL ROAD SAFETY PLANS: Your Map to Safer Roadways". The main header consists of five green buttons labeled "Step 1 Identify Stakeholders", "Step 2 Use Safety Data", "Step 3 Choose Proven Solutions", "Step 4 Implement Solutions", and "Finish Line". Below these, a welcome message reads: "Welcome to the local road safety plan do-it-yourself website! We are so happy you are here. On this site, you'll find everything you need to make a plan that fits your community and gets people home safely. Watch the video below to learn how to use the site and build your plan. If you need help contact us anytime." The central focus is a video player titled "LRSP DIY: Introduction" with a play button and the text "LOCAL ROAD SAFETY PLANS: Your Map to Safer Roadways" and "INTRODUCTION". To the right, a section titled "SCROLL DOWN FOR MORE VIDEOS" includes a "Welcome - FHWA Leadership" button and a "Local Road Safety Plan" button. At the bottom, a "TOOLS & RESOURCES" section includes links for "Guides & Training", "LRSP Examples", and "State LRSP Sites".

LOCAL ROAD SAFETY PLANS:
Your Map to Safer Roadways

Step 1
Identify
Stakeholders

Step 2
Use
Safety Data

Step 3
Choose Proven
Solutions

Step 4
Implement
Solutions

Finish Line

Welcome to the local road safety plan do-it-yourself website! We are so happy you are here. On this site, you'll find everything you need to make a plan that fits your community and gets people home safely. Watch the video below to learn how to use the site and build your plan. If you need help contact us anytime.

LRSP DIY: Introduction

Watch later Share

LOCAL ROAD SAFETY PLANS:
Your Map to Safer Roadways

INTRODUCTION

SCROLL DOWN FOR MORE VIDEOS

Welcome - FHWA Leadership

LOCAL ROAD SAFETY PLANS:
Your Map to Safer Roadways

Welcome

Local Road Safety Plan

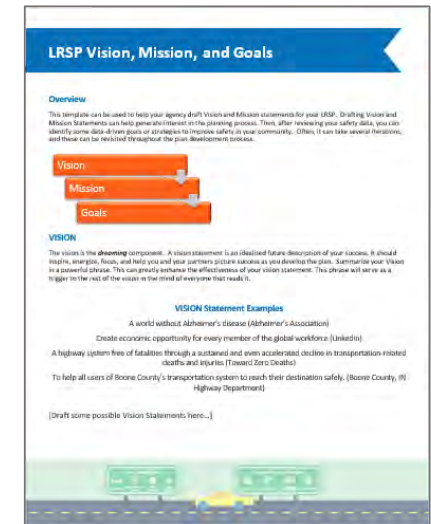
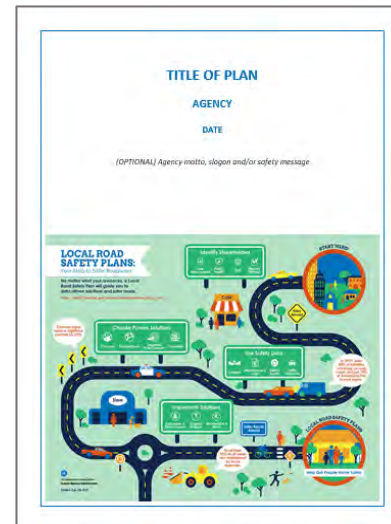
TOOLS & RESOURCES

Guides & Training LRSP Examples State LRSP Sites

<https://safety.fhwa.dot.gov/LRSPDIY/>

Local Road Safety Plans Templates & Resources

- Safety Plan Templates
- Goals
 - Reduce the number of fatal crashes to Zero by 2030.
 - Implement proven safety solutions systemically to reduce fatal and severe crashes.
 - Reduce the number of severe Run off the Road crashes by 50% by 2025.
 - Increase seat belt usage by 20% for teenage drivers.
 - Go 12 months without a teenage driver or passenger death.



Safety Plan Vision, Mission & Goals



<https://youtu.be/WECJzLiNbY>

LOCAL ROAD SAFETY PLANS:

Your Map to Safer Roadways

No matter what your resources, a Local Road Safety Plan will guide you to data-driven solutions and safer roads.

<https://safety.fhwa.dot.gov/provencountermeasures/localroad/>

Chevron signs reduce nighttime crashes by 25%.

Choose Proven Solutions



Identify Stakeholders



Use Safety Data



Implement Solutions



START HERE!



In 2017, over 50% of fatalities occurred on rural roads, but just 19% of Americans live in rural areas.

LOCAL ROAD SAFETY PLANS

Help Get People Home Safely



U.S. Department of Transportation
Federal Highway Administration

More than 75% of all roads are maintained by local agencies.

Safer Roads Ahead

Risks Ahead

Store

Café

The Public Health Connection

- **Mission of Public Health**

- To reduce the preventable causes of disease, injury, disability and death.

- **Public Health Agencies**

- We want to share data to zero in on where road design and law enforcement could be enhanced.
- We can help convene the community.
- We can advocate on safety laws/ policies
- We can contribute funding



Holly was 18; she was driving her car near an intersection and didn't see the approaching vehicle. The collision left Holly with a traumatic brain injury.

"That moment of my life—you might say was the intersection of my life,' which resulted in the trajectory of my entire career and my life forward. I truly believe that everything happens for a reason, and I believe that I didn't choose my career path—my career path chose me. I knew of public health professions because my mom was a nursing director, but I never thought of the link to transportation. I wish that more people in public health knew about traffic safety as a specialization."

— Excerpt from interview with Holly Kostrzewski

Systemic Safety for Gravel Roads



“Extra Eyes for Safety”

- Maintenance
 - Grading, cross slope, drainage, etc.
- Sight Distance
 - Vegetation clearing
- Delineators
- Signing
 - Intersections
 - Yield control
 - Stop Ahead
 - Curves
 - Curve Ahead
 - Advisory Speed Plates
 - Chevrons

Preventing Severe Roadway Departure Crashes



Source: FHWA Office of Safety

FHWA Proven Safety Countermeasures

COMING SOON



- Updating existing and adding NEW countermeasures!
- Adding a tool to help filter countermeasures by focus area, crash type, problem identified, and area type

<https://safety.fhwa.dot.gov/provencountermeasures/>

High Friction Surface Treatment - Thurston County, WA



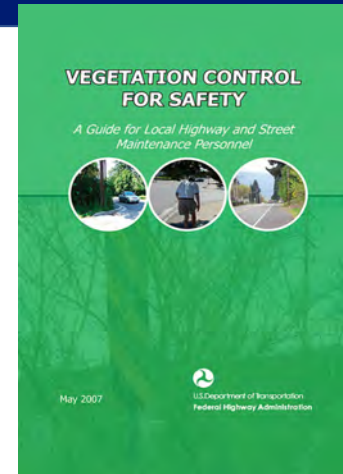
<https://www.co.thurston.wa.us/publicworks/media/WTSC%20WSDOT%20High-Friction%20Surfacing%20Treatment.mp4>

VERY Low Cost Countermeasures

- Clear the vegetation
 - Signs, signals, intersections, and driveways
- Observe and adjust signal timing
 - Particularly off-peak



Source: FHWA Office of Safety



FHWA Focused Approach to Safety (FAS)



- Roll out – October 20, 2021
- <https://safety.fhwa.dot.gov/fas/>
- Utilize 6 years of NHTSA FARS data, SHSP Database, Incorporate Equity Considerations
- Continue with existing focus areas:
Roadway Departure, Intersections, Pedestrians and Bicycles
 - Add **Speed Management** as an emphasis area across all Focus Areas
 - Add **Two-Lane Rural Roads** emphasis area for Roadway Departure focus area
 - Instead of Cities (current FAS), identify **Regions/MPOs** for Intersections, Pedestrians and Bicycle Focus Areas
- Priority Training & Technical Assistance

FHWA Focused Approach to Safety (FAS)

- Roll out – October 20, 2021
- <https://safety.fhwa.dot.gov/fas/>
- Contact your FHWA Division Office Safety Specialist for more Information on FAS & the Resource Center Call for Service



2021 Focus States






Source: FHWA

2021 (16 total):

Alabama, Arizona, California, **Colorado**, Florida, Louisiana, Mississippi, **Montana**, Nevada, New Mexico, North Carolina, **Oklahoma**, Puerto Rico, South Carolina, Texas, **Wyoming**

2021 Map Notes:

1. **Bold** indicates States added with 2021 Update

-  Intersection
-  Roadway Departure
-  Pedestrian-Bicycle

Rural Road Safety Awareness Week Highlights



Vision Zero ND @VisionZeroND · Jul 23

First responders rely on us too! When you see lights, vests and reflectors... slow down and move over to keep our emergency responders safe.

[#RRSAW2021](#) [#RuralRoadSafety](#)



vimeo.com

Slow Down Move Over PSA

Respondersafety.com is proud to present a new free public service announcement, Slow Down Move Over. The PSA was made possible b...



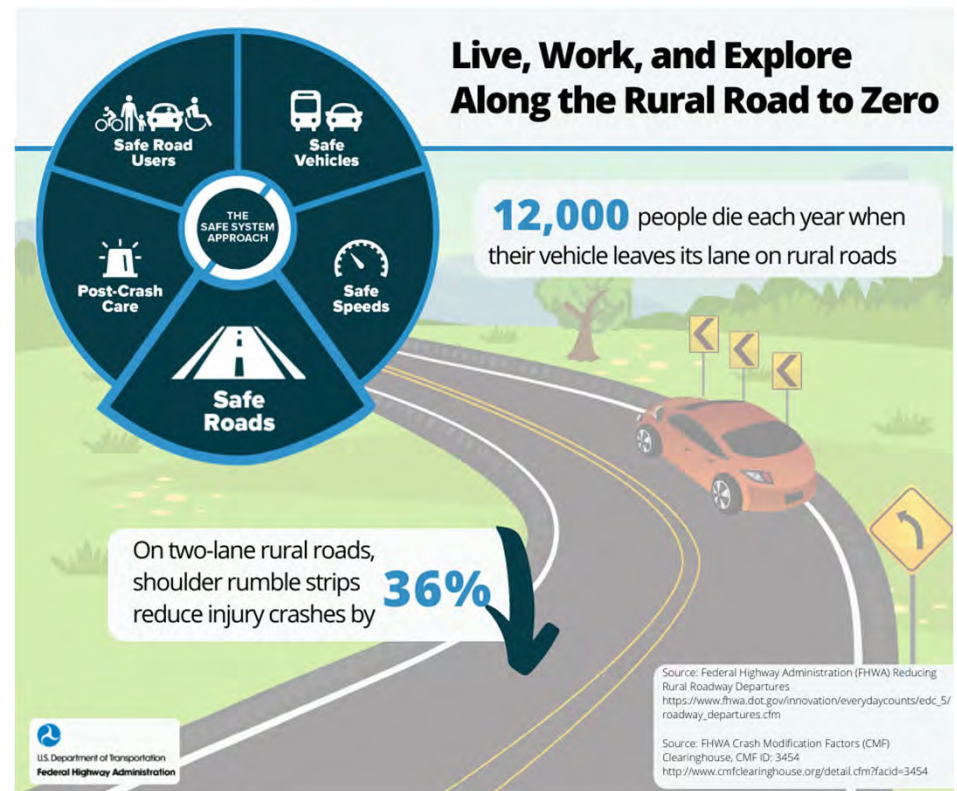
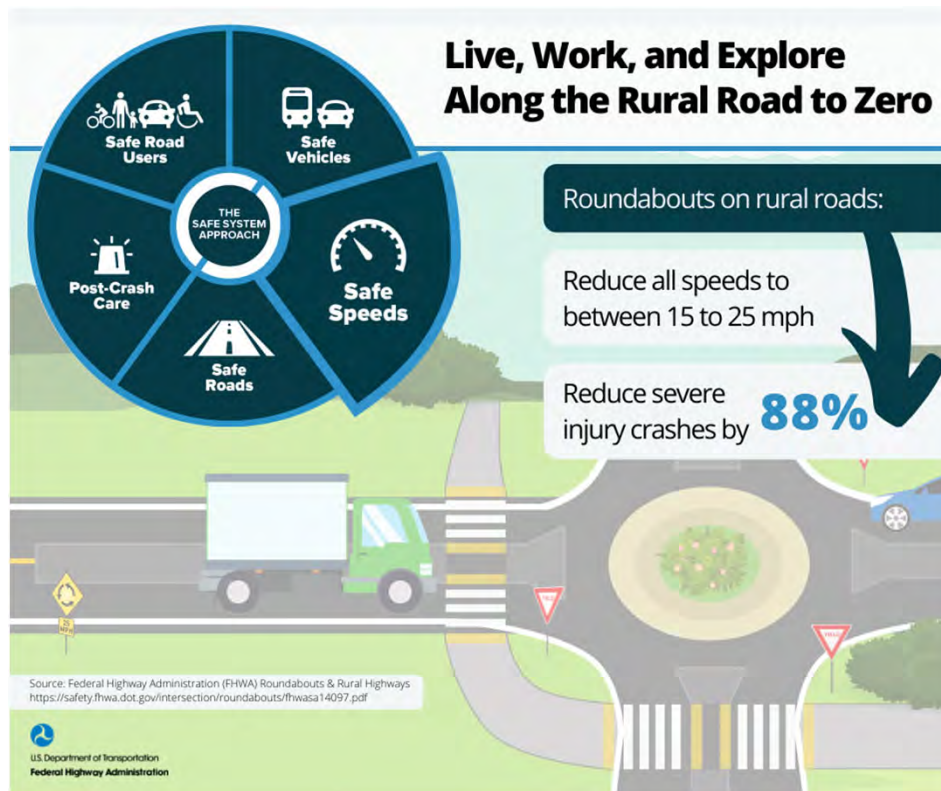
saveMOlives @saveMOlives · Jul 20

Did you know that in the event of a crash the interior design of a vehicle (like seat belts & airbags) increases survivability by reducing impact forces on your body? Mistakes happen, so make sure you are prepared & wear your seatbelt! [#RRSAW2021](#)

[#RuralRoadSafety](#) [@ruralroadsafety](#)



Rural Road Safety Awareness Week Highlights



Source: FHWA Office of Safety

Messaging with Facts - Public Service Announcement (PSA)



<https://wisconsin.gov/Pages/doing-business/civil-rights/tribalaffairs/default.aspx>

Help Get People Home Safely

- Celebrate your Safety Milestones
- Use a Data Driven Risk-Based Approach
- Foster Innovation – If it is new to you, it is innovative!
- Be an Amazing Partner & Look for New Partnerships
- Do not get too Comfortable



“Do what you can. With what you have. Where you are.” - Theodore Roosevelt



U.S. Department of Transportation
Federal Highway Administration



Thank You!

Have a Safe Day

Hillary
FHWA Resource Center
720-545-4357