

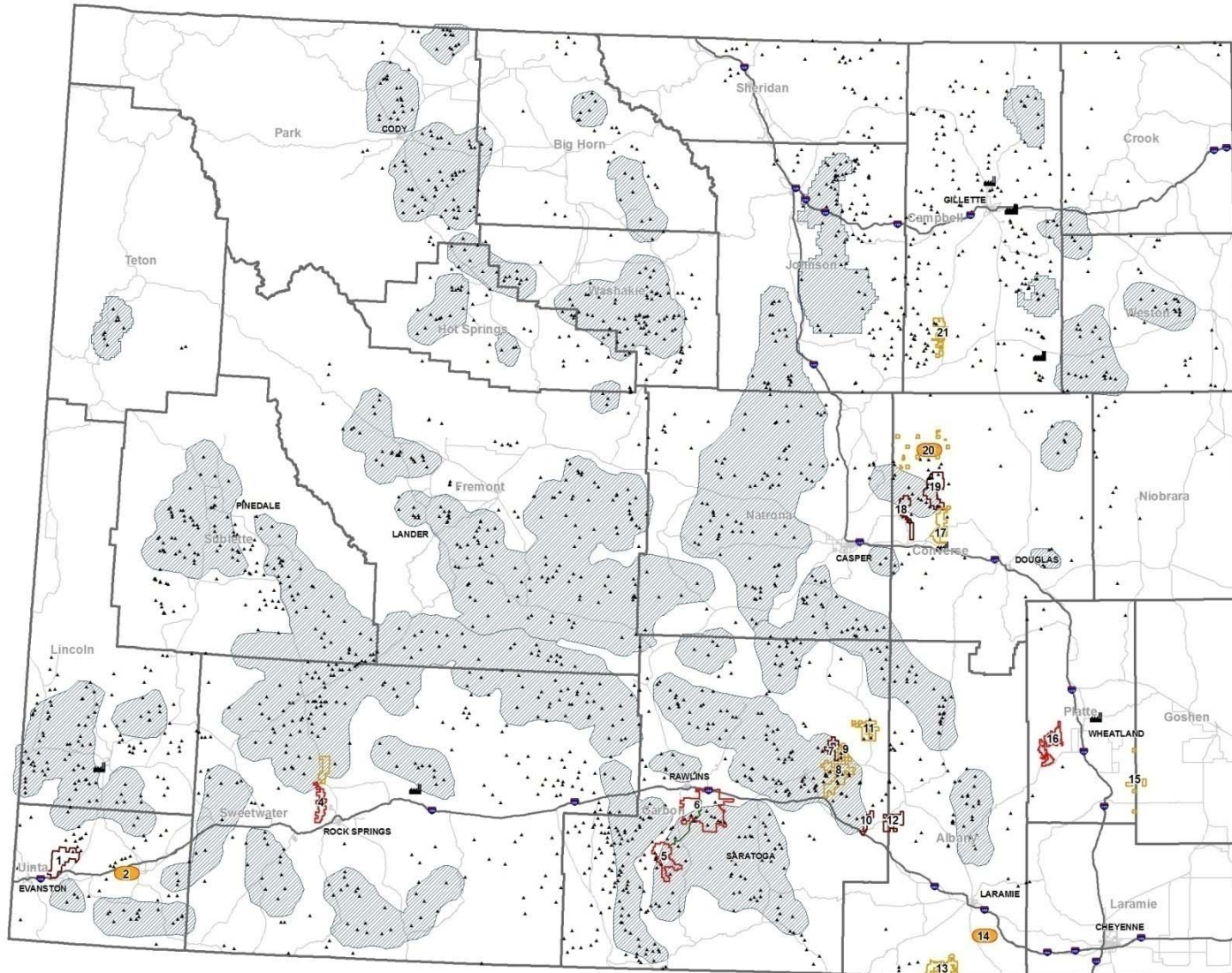


WYOMING COUNTY COMMISSIONERS ASSOCIATION

Industrial Siting and Wind Energy Task Force

Ed Werner, Task Force Chairman
Converse County Commissioner

ISD Projects



DEQ/ISD LIST OF EXISTING AND POTENTIAL WINDFARMS

- 1 FPL WIND FARM LLC
- 2 BRIDGER BUTTE
- 3 LONESOME BRONCO
- 4 WHITE MOUNTAIN
- 5 SIERRA MADRE
- 6 CHOKE CHERRY
- 7 MILE HILL
- 8 SIMPSON RIDGE
- 9 PINE DRAW
- 10 FOOTE CREEK RIM
- 11 DUNLAP
- 12 HIGH PLAINS/MCFADDEN RIDGE
- 13 LEWIS RANCH
- 14 FLAGG ROCK
- 15 NOVELUTION
- 16 WHEATLAND WIND
- 17 TOP OF THE WORLD
- 18 CAMPBELL HILL
- 19 GLENROCK & ROLLING HILLS
- 20 RESOLUTE WIND
- 21 RENO JUNCTION

Legend

- WYOMING SAGE GROUSE LEKS 06
- BLM - PENDING NEPA ANALYSIS
- ISC - PERMITTED
- PROPOSED
- COUNTIES
- POWER PLANTS ALL
- POTENTIAL WIND FARMS
- ▨ SAGE GROUSE CORE AREAS
- ~ PR POWERLINE ROUTE
- ~ INTERSTATE HIGHWAYS
- ~ ROADS PRIMARY



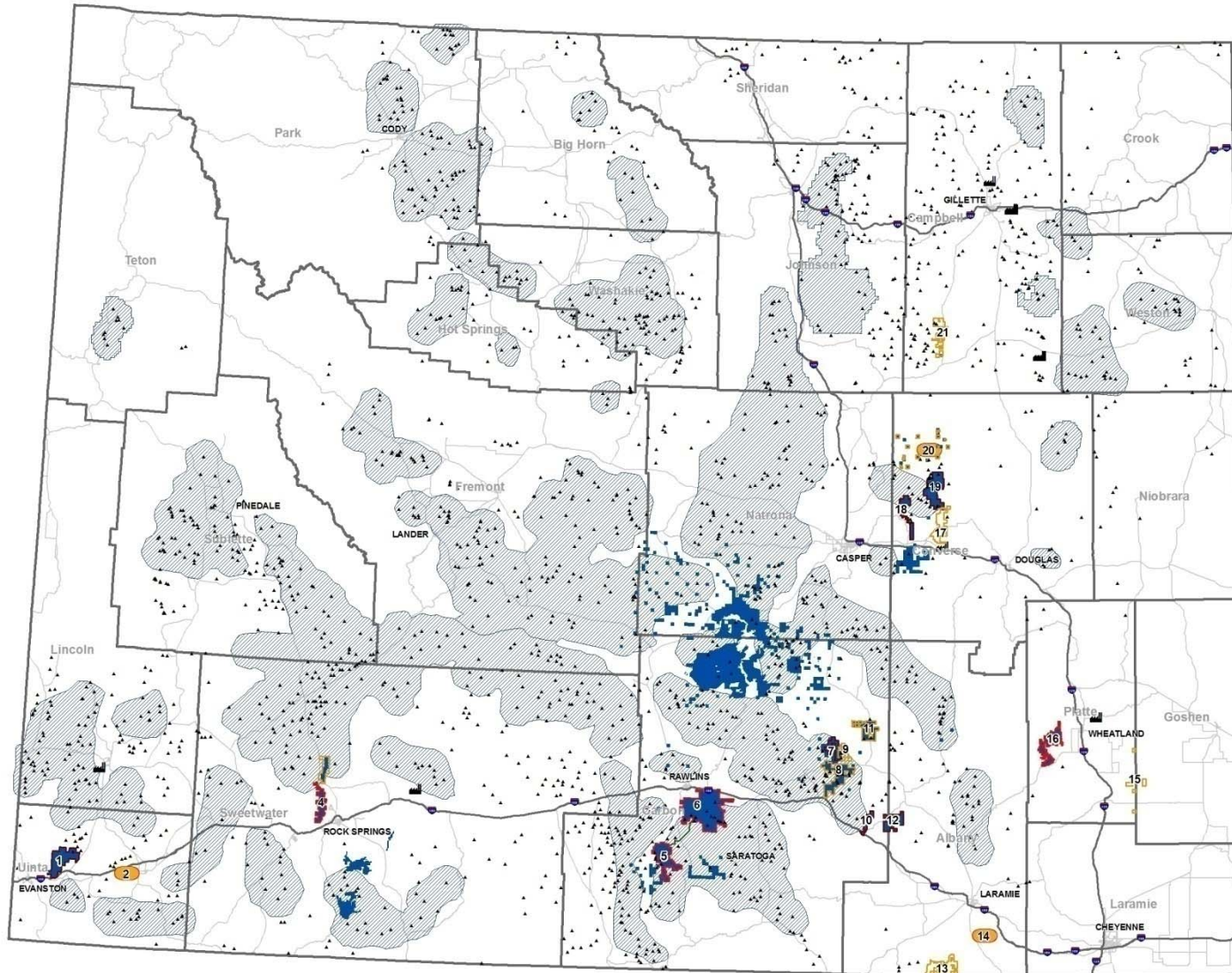
0 10 20 40 60 80 Miles



DEQ - Industrial Siting Division
08-21-09

The data comes from a variety of sources, and is believed to be accurate. The Lewis Ranch Wind Project boundary was supplied by the Albany County Geographic Information System Department (Alan Frank (307) 721-5504).

ISD, Game & Fish Projects



DEQ/ISD LIST OF EXISTING AND POTENTIAL WINDFARMS

- 1 FPL WIND FARM LLC
- 2 BRIDGER BUTTE
- 3 LONESOME BRONCO
- 4 WHITE MOUNTAIN
- 5 SIERRA MADRE
- 6 CHOKE CHERRY
- 7 MILE HILL
- 8 SIMPSON RIDGE
- 9 PINE DRAW
- 10 FOOTE CREEK RIM
- 11 DUNLAP
- 12 HIGH PLAINS/MCFADDEN RIDGE
- 13 LEWIS RANCH
- 14 FLAGG ROCK
- 15 NOVELUTION
- 16 WHEATLAND WIND
- 17 TOP OF THE WORLD
- 18 CAMPBELL HILL
- 19 GLENROCK & ROLLING HILLS
- 20 RESOLUTE WIND
- 21 RENO JUNCTION

Legend

- WYOMING SAGE GROUSE LEKS 06
- BLM - PENDING NEPA ANALYSIS
- ISC - PERMITTED
- PROPOSED
- WGf WIND PROJECTS
- COUNTIES
- POWER PLANTS ALL
- POTENTIAL WIND FARMS
- SAGE GROUSE CORE AREAS
- PR POWERLINE ROUTE
- INTERSTATE HIGHWAYS
- ROADS PRIMARY



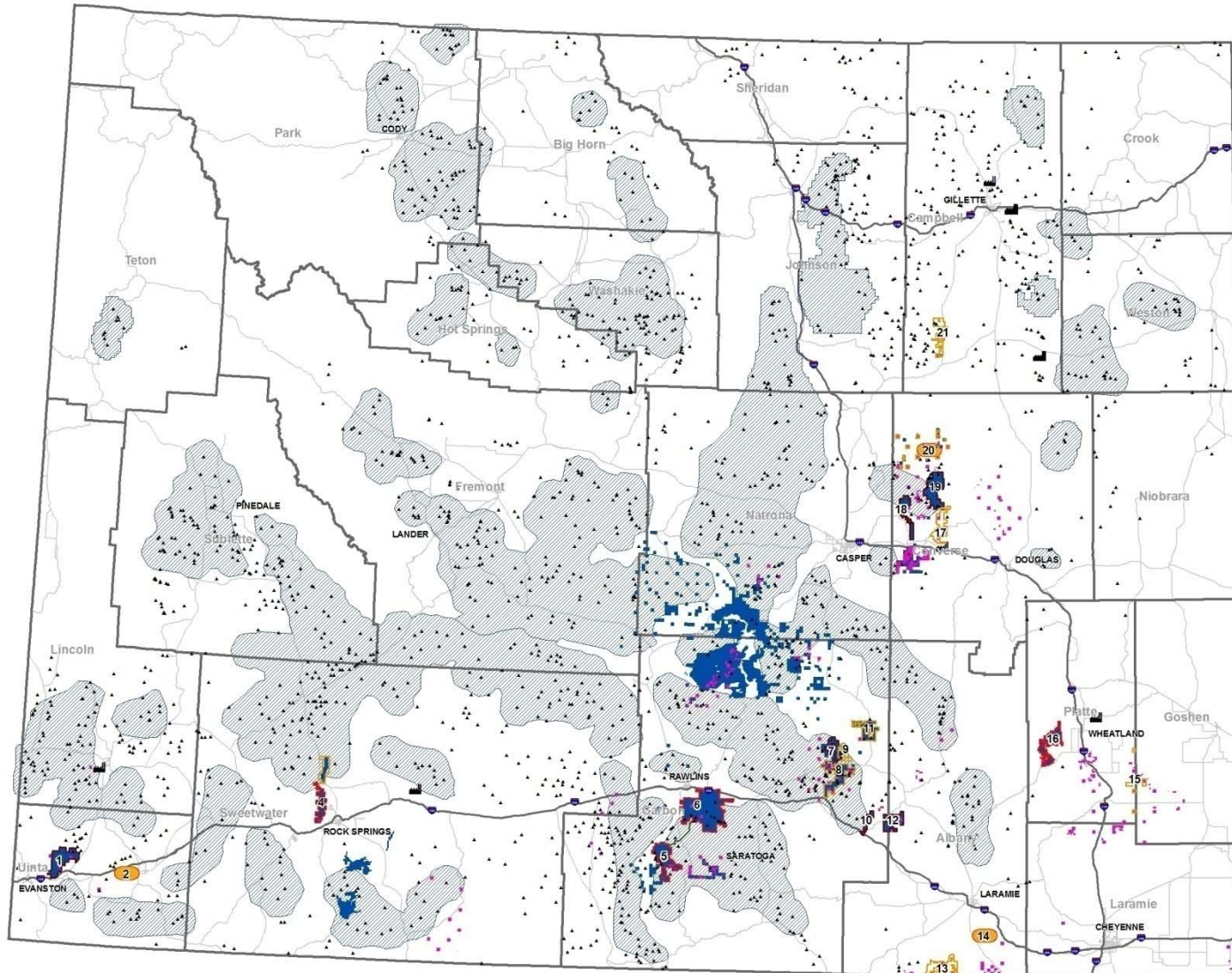
0 10 20 40 60 80 Miles



DEQ - Industrial Siting Division
08-21-09

The data comes from a variety of sources, and is believed to be accurate. The Lewis Ranch Wind Project boundary was supplied by the Albany County Geographic Information System Department (Alan Frank (307) 721-5504).

ISD, Game & Fish, State Lands



DEQ/ISD LIST OF EXISTING AND POTENTIAL WINDFARMS

- 1 FPL WIND FARM LLC
- 2 BRIDGER BUTTE
- 3 LONESOME BRONCO
- 4 WHITE MOUNTAIN
- 5 SIERRA MADRE
- 6 CHOKE CHERRY
- 7 MILE HILL
- 8 SIMPSON RIDGE
- 9 PINE DRAW
- 10 FOOTE CREEK RIM
- 11 DUNLAP
- 12 HIGH PLAINS/MCFADDEN RIDGE
- 13 LEWIS RANCH
- 14 FLAGG ROCK
- 15 NOVELUTION
- 16 WHEATLAND WIND
- 17 TOP OF THE WORLD
- 18 CAMPBELL HILL
- 19 GLENROCK & ROLLING HILLS
- 20 RESOLUTE WIND
- 21 RENO JUNCTION

Legend

- WYOMING SAGE GROUSE LEKS 06
- BLM - PENDING NEPA ANALYSIS
- ISC - PERMITTED
- PROPOSED
- WOSLI WIND PROJECTS
- WGF WIND PROJECTS
- COUNTIES
- POWER PLANTS ALL
- POTENTIAL WIND FARMS
- SAGE GROUSE CORE AREAS
- PR POWERLINE ROUTE
- INTERSTATE HIGHWAYS
- ROADS PRIMARY



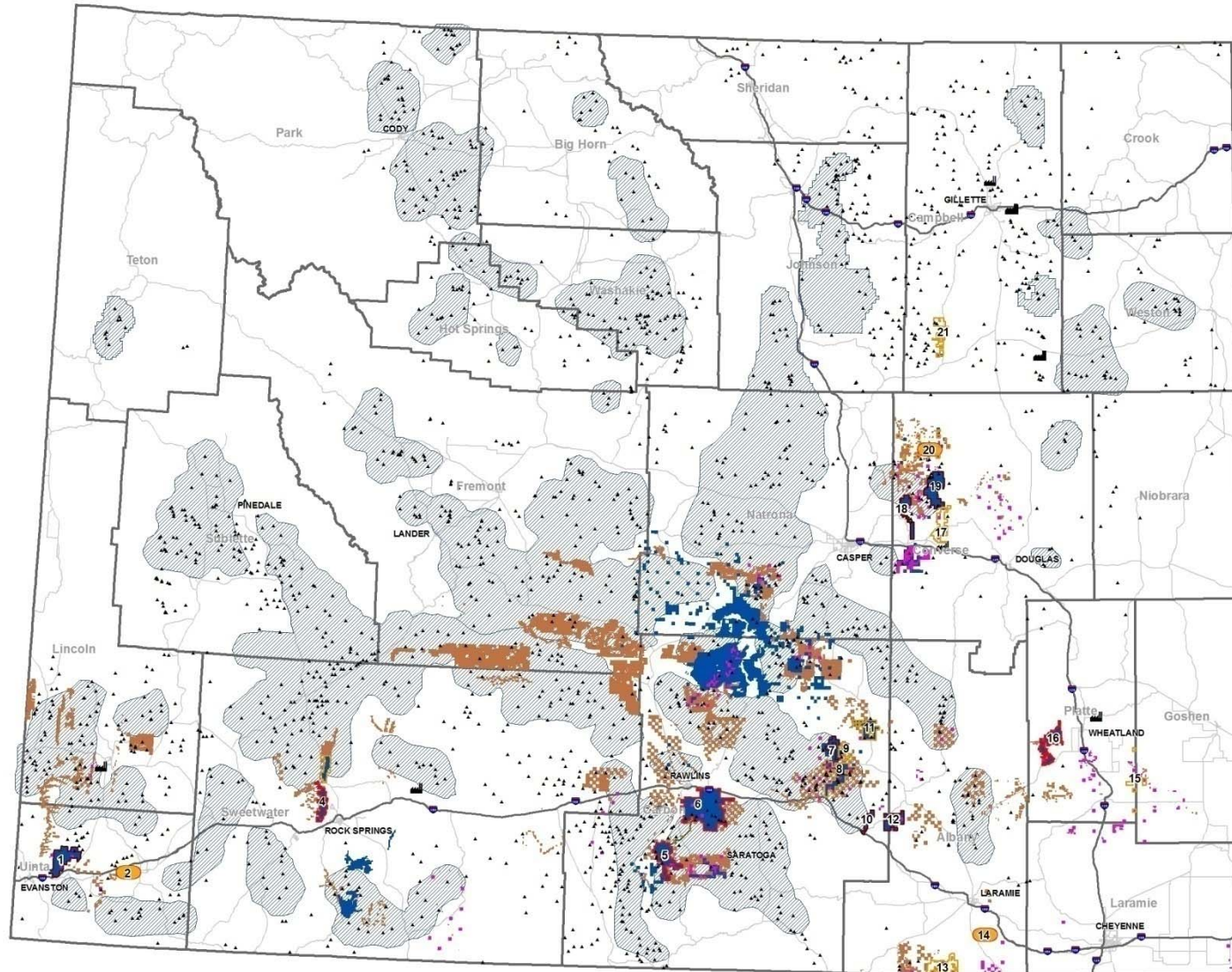
0 10 20 40 60 80 Miles



DEQ - Industrial Siting Division
08-21-09

The data comes from a variety of sources, and is believed to be accurate. The Lewis Ranch Wind Project boundary was supplied by the Albany County Geographic Information System Department (Alan Frank (307) 721-5504).

ISD, G&F, OSLI, and BLM Wind Projects

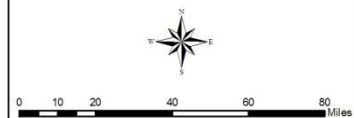


DEQ/ISD LIST OF EXISTING AND POTENTIAL WINDFARMS

- 1 FPL WIND FARM LLC
- 2 BRIDGER BUTTE
- 3 LONESOME BRONCO
- 4 WHITE MOUNTAIN
- 5 SIERRA MADRE
- 6 CHOKE CHERRY
- 7 MILE HILL
- 8 SIMPSON RIDGE
- 9 PINE DRAW
- 10 FOOTE CREEK RIM
- 11 DUNLAP
- 12 HIGH PLAINS/MCFADDEN RIDGE
- 13 LEWIS RANCH
- 14 FLAGG ROCK
- 15 NOVELUTION
- 16 WHEATLAND WIND
- 17 TOP OF THE WORLD
- 18 CAMPBELL HILL
- 19 GLENROCK & ROLLING HILLS
- 20 RESOLUTE WIND
- 21 RENO JUNCTION

Legend

- WYOMING SAGE GROUSE LEKS 06
- BLM - PENDING NEPA ANALYSIS
- ISC - PERMITTED
- PROPOSED
- POTENTIAL WIND FARMS
- WOSLI WIND PROJECTS
- WYGF_WIND_PROJECTS
- BLM_WIND_FACILITIES
- COUNTIES
- POWER PLANTS ALL
- SAGE GROUSE CORE AREAS
- ~ PR POWERLINE ROUTE
- ~ INTERSTATE HIGHWAYS
- ~ ROADS PRIMARY



DEQ - Industrial Siting Division
08-21-09

The data comes from a variety of sources, and is believed to be accurate. The Lewis Ranch Wind Project boundary was supplied by the Albany County Geographic Information System Department (Alan Frank (307) 721-5504).

WCCA WIND TASK FORCE

OVERVIEW OF PROPOSED STATUTES

- ✘ Model new statutes similar to Subdivision Statutes.
- ✘ Allows local control under the umbrella of State Law.
- ✘ Process enables Counties to issue permits upon satisfactory demonstration that development meets minimum consistent standards.
- ✘ Minimum State standards could be strengthened by choice of local officials through local rule.
- ✘ Creates a consistent minimum standard state wide.
- ✘ Industry is aware of minimum standards.

WCCA WIND TASK FORCE

OVERVIEW OF PROPOSED STATUTES

- ✘ Decommissioning and financial assurances thereof should be established by the State for uniformity but allow stricter standards by County.
- ✘ Counties are in favor of ongoing revenue from wind energy. We specifically ask that such revenue streams consider the long term impact wind turbines have on local citizens with provisions to share this revenue directly with Counties home to each project.

Permit Requirements (proposed)

- ✗ Site has legal access
- ✗ Landowner(s) consent to the project
- ✗ Notice to surrounding landowners
- ✗ Emergency management plans
- ✗ Impact study for construction and operations
- ✗ Road use agreements and alternative routes
- ✗ Site plan including towers, roads and infrastructure
- ✗ Reclamation plan
- ✗ Decommissioning plan

State Minimum Standards (proposed)

✕ Setbacks

- + 110% of the max. height set back from project perimeter
- + 110% of the max. height set back from public and county road right of way
- + ¼ mile set back from a platted subdivision
- + ¼ mile set back from a residence or occupied structure
- + ½ mile set back from any incorporated limits of a Town or Municipality

State Minimum Standards (proposed)

- ✖ Public hearings
 - + Minimum of one hearing by County Commissioners
 - + Allowance for P&Z to also conduct hearing
- ✖ Permit fees based on minimum per tower but can go to larger project basis
- ✖ For projects that fall under Industrial Siting Division jurisdiction, ISD would supersede in areas of overlap



WYOMING COUNTY COMMISSIONERS ASSOCIATION

Industrial Siting and Wind Energy Task Force

Ed Werner, Task Force Chairman
Converse County Commissioner
ed.werner@conversecounty.org